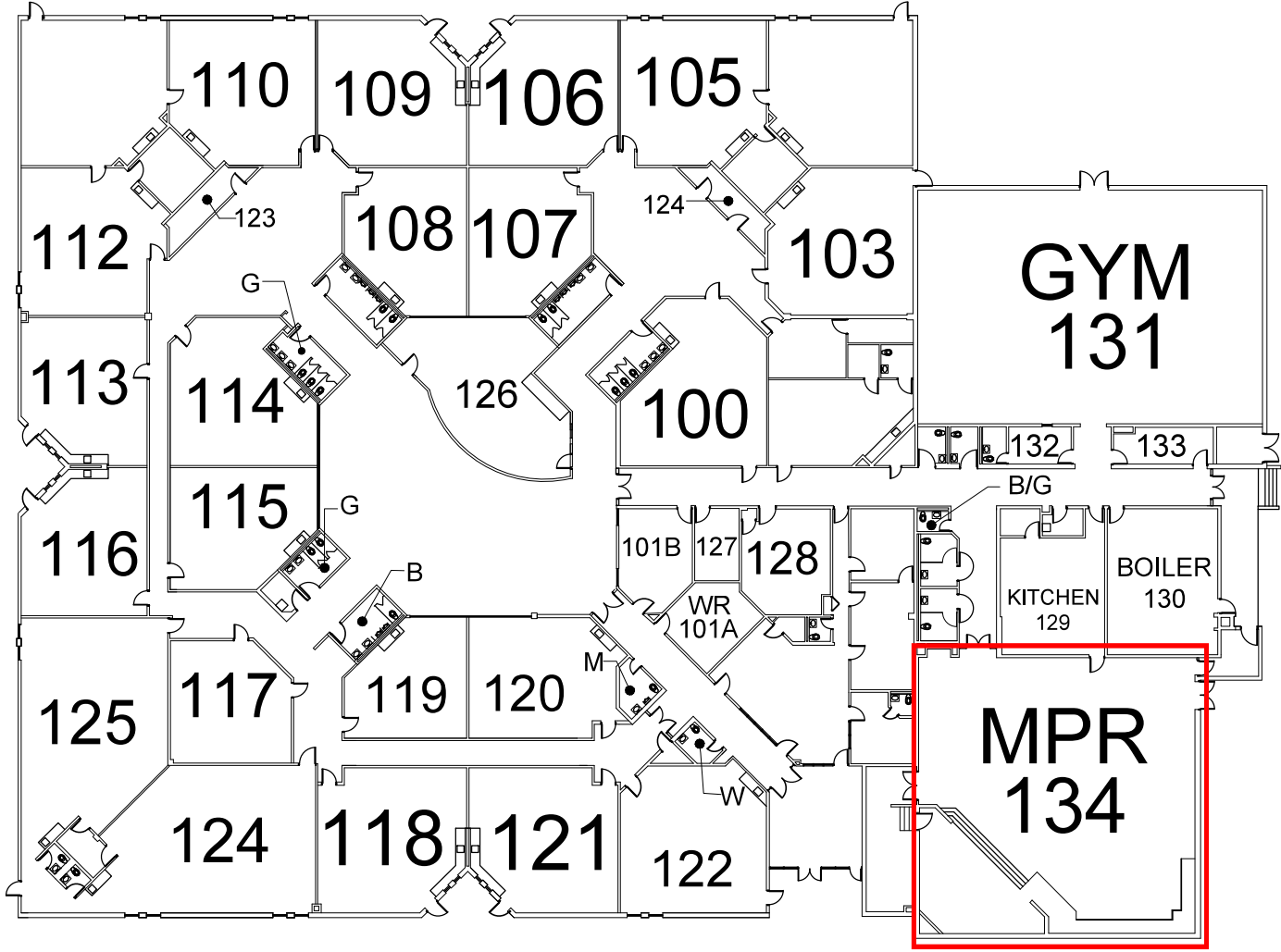


MAIN FLOOR PLAN

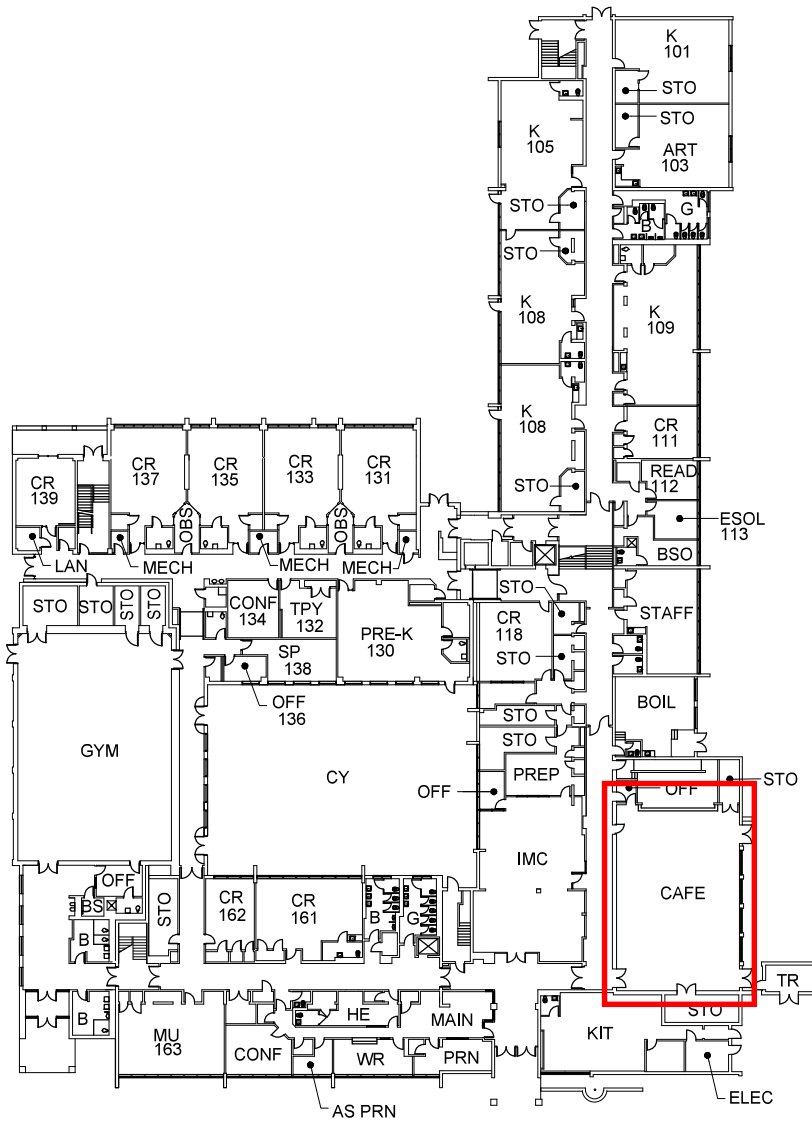


LUCY BARNSLEY ELEMENTARY SCHOOL

0' 10' 20' 40'
SCALE= 1:750



MAIN FLOOR PLAN



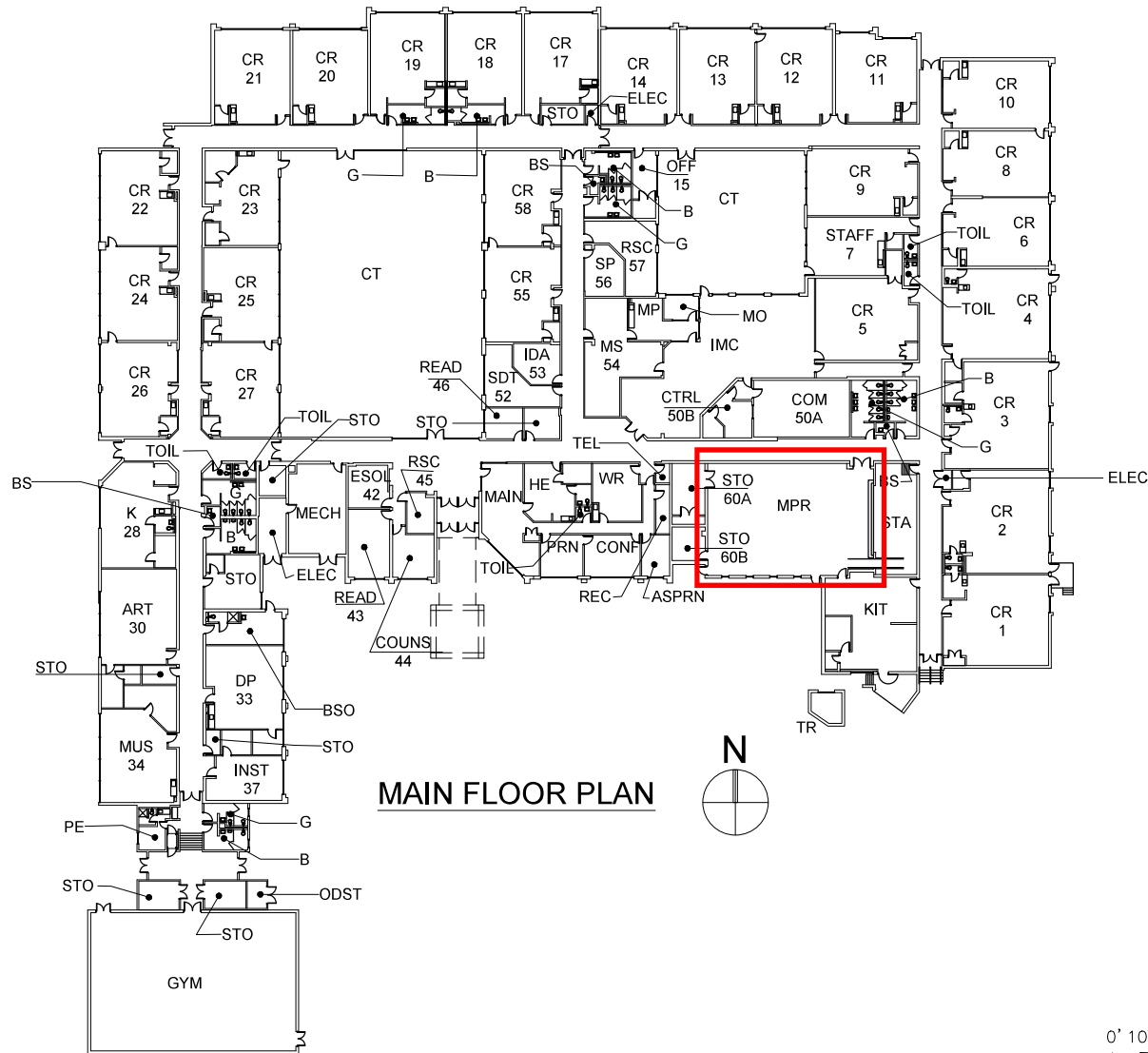
MAIN FLOOR PLAN



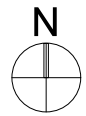
BROOKHAVEN ELEMENTARY SCHOOL

UPDATED: 3/20/20





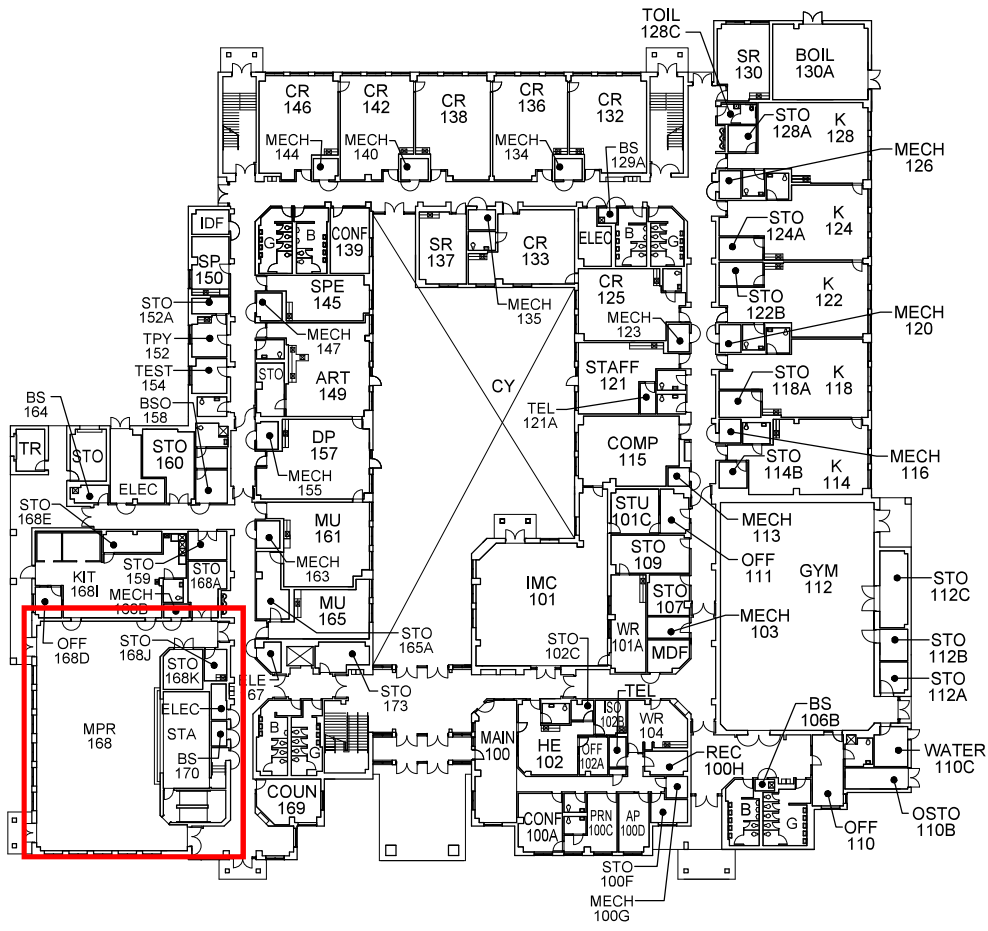
MAIN FLOOR PLAN



0' 10' 20' 40'
 SCALE= 1:750

BURTONSVILLE ELEMENTARY SCHOOL

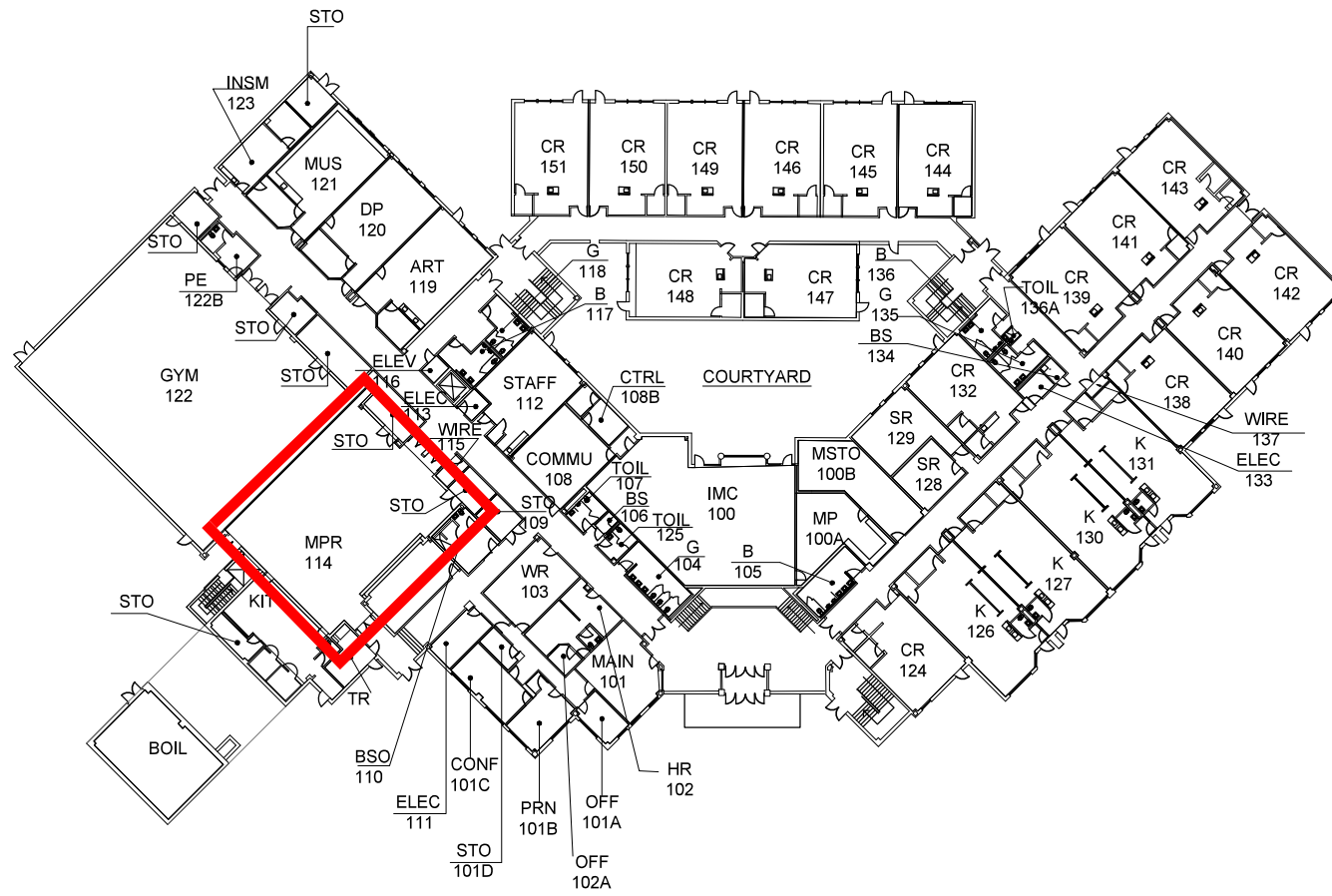
UPDATED
 8/30/23



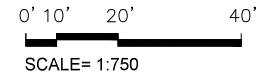
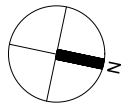
MAIN LEVEL FLOOR PLAN

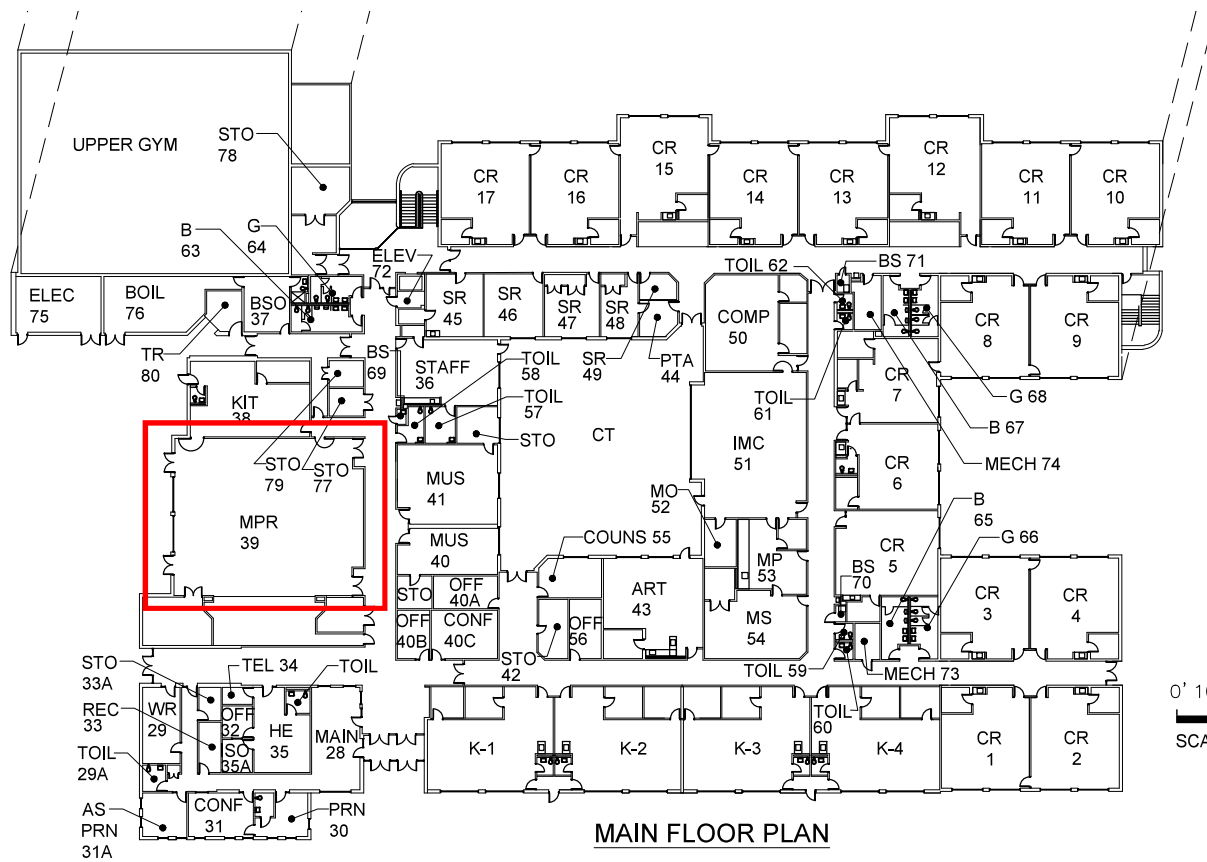


CANDLEWOOD ELEMENTARY SCHOOL



MAIN FLOOR PLAN

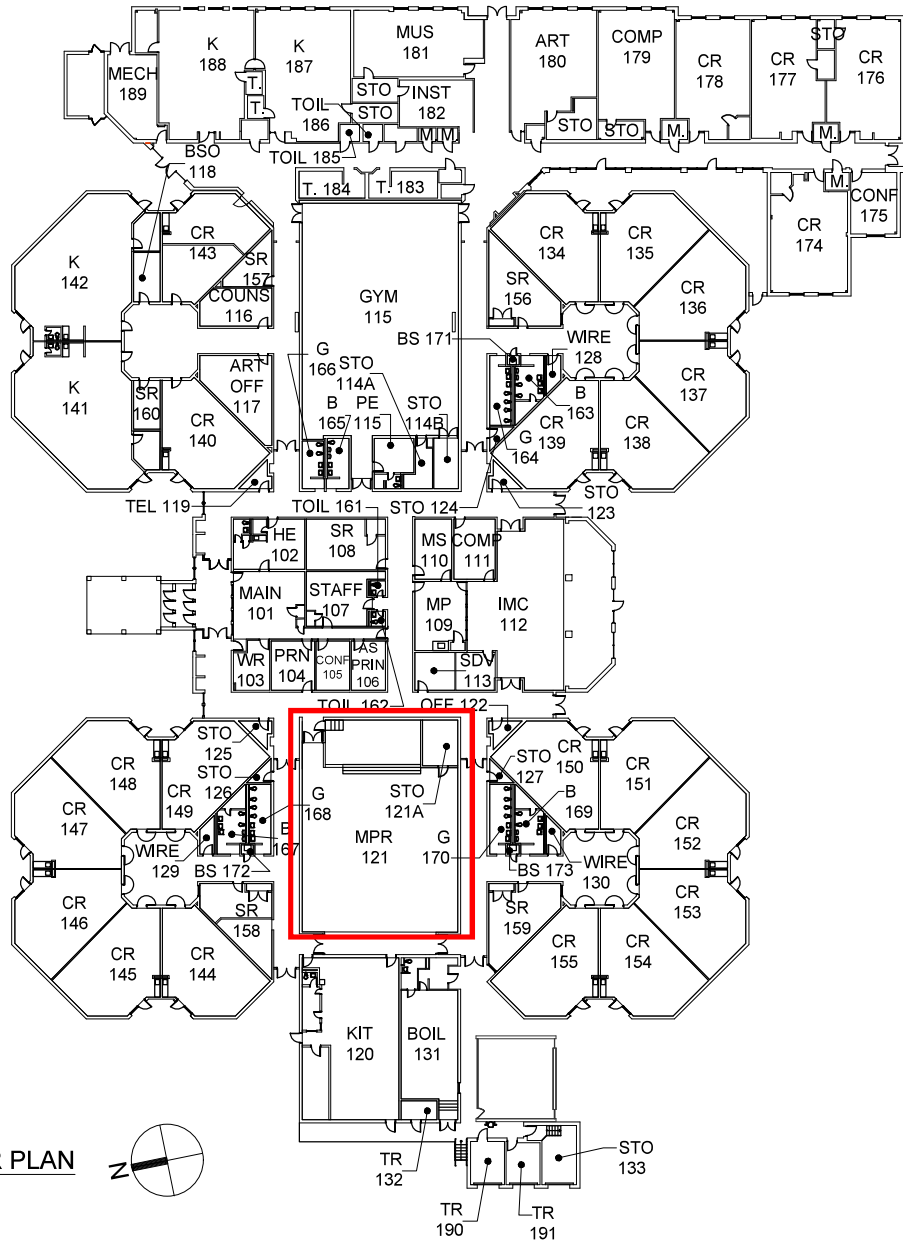




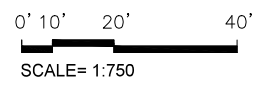
0' 10' 20' 40'
SCALE= 1:750

CLEARSPRING ELEMENTARY SCHOOL

UPDATED: 9/9/20

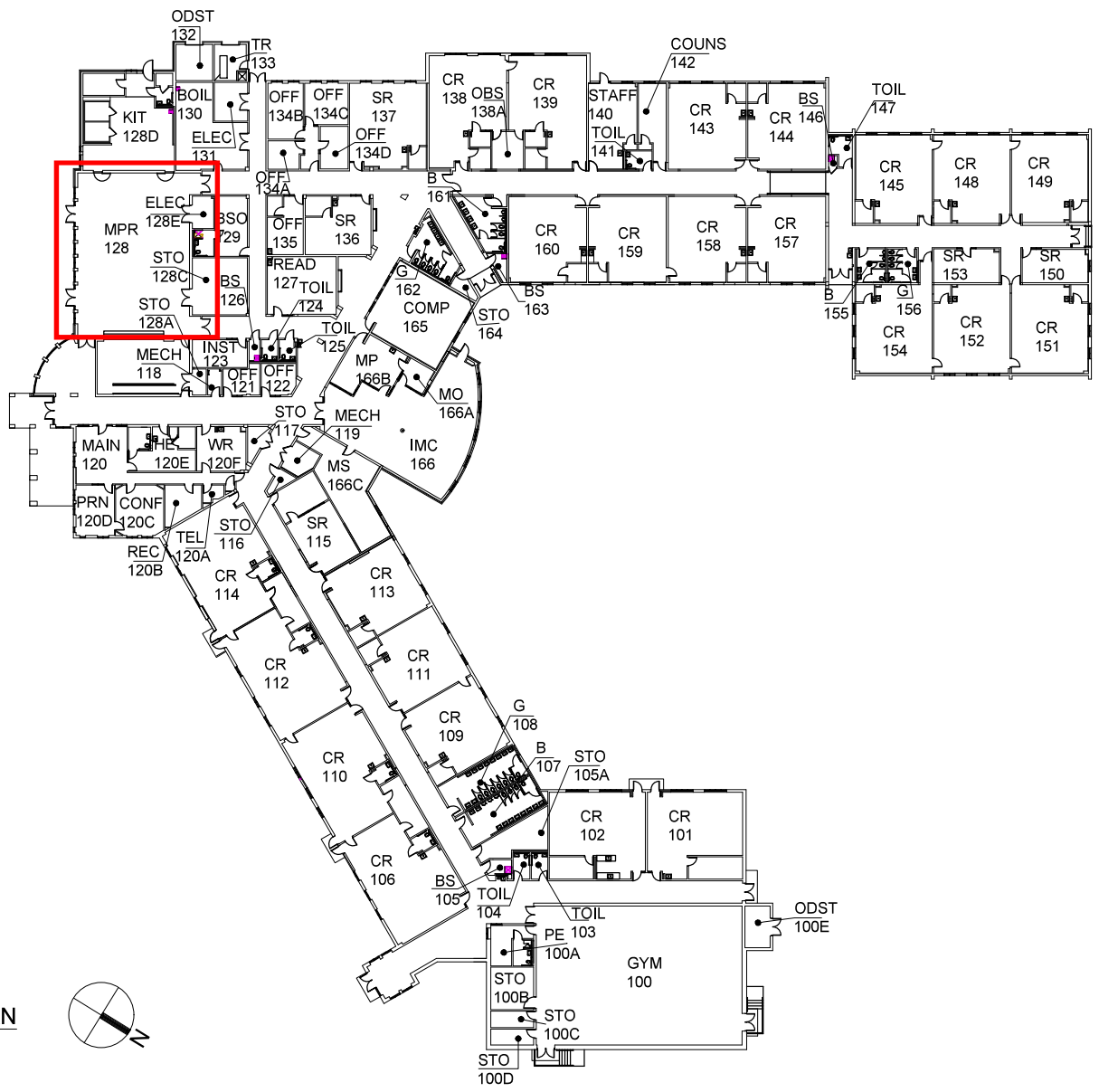


MAIN FLOOR PLAN

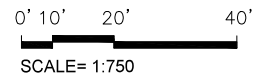
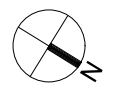


FALLSMEAD ELEMENTARY SCHOOL

UPDATED: 4/9/20

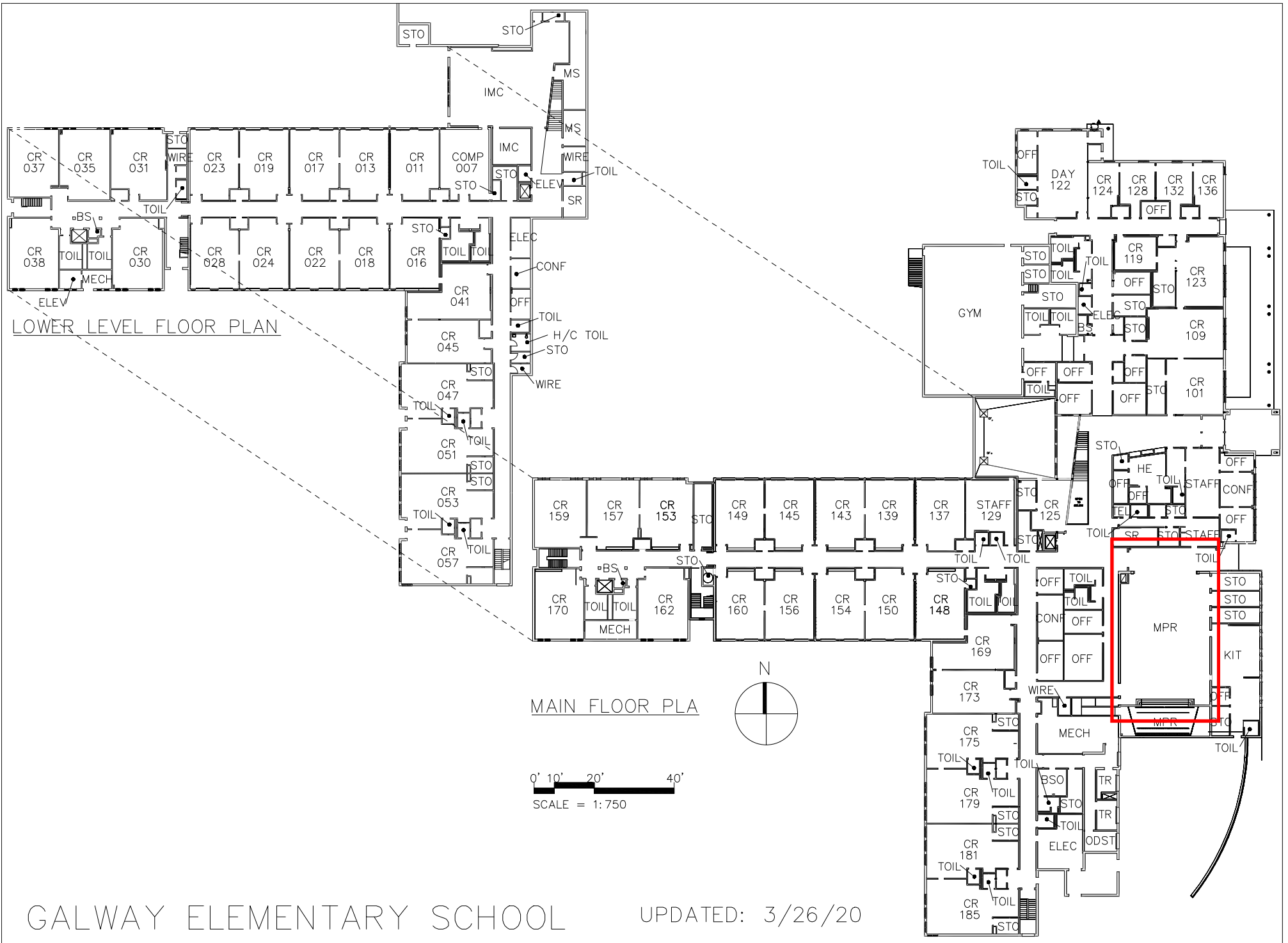


MAIN FLOOR PLAN



FLOWER VALLEY ELEMENTARY SCHOOL

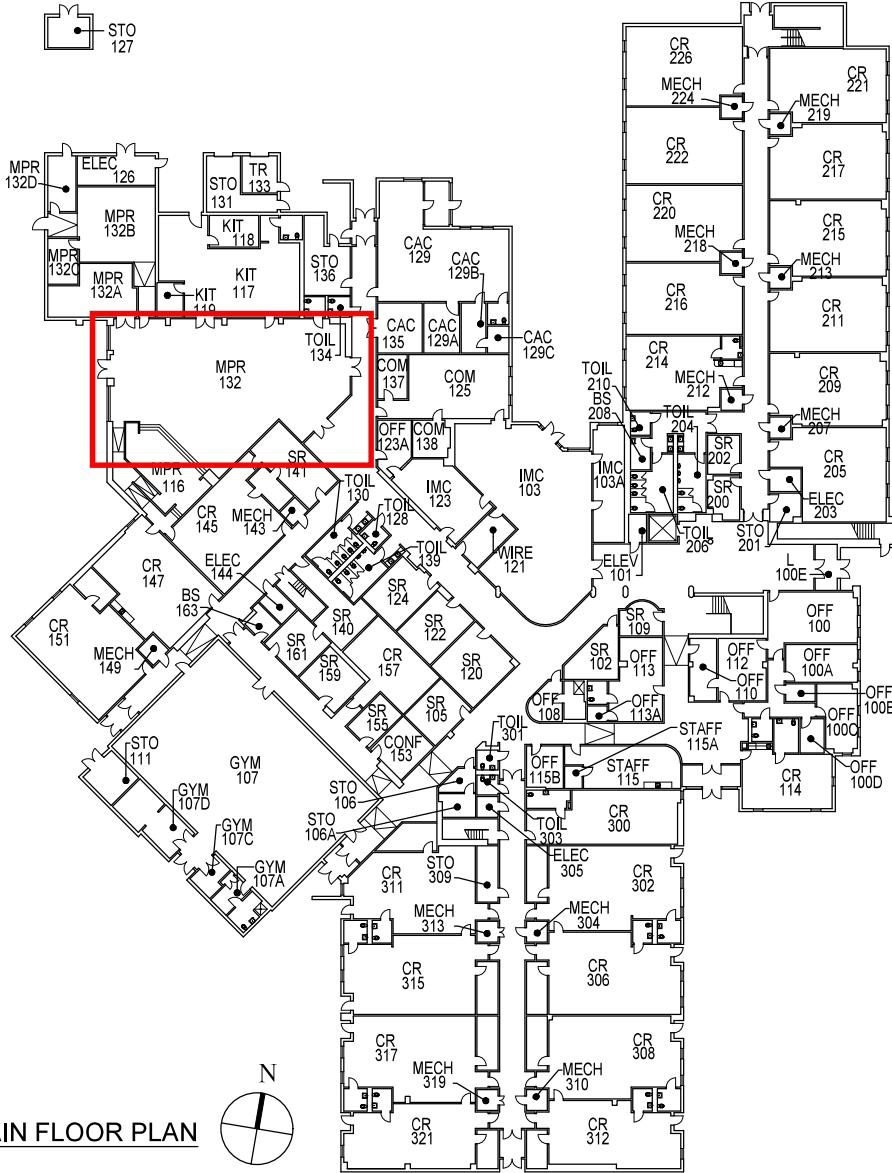
UPDATED: 3/23/20



LOWER LEVEL FLOOR PLAN

MAIN FLOOR PLAN

0' 10' 20' 40'
SCALE = 1:750



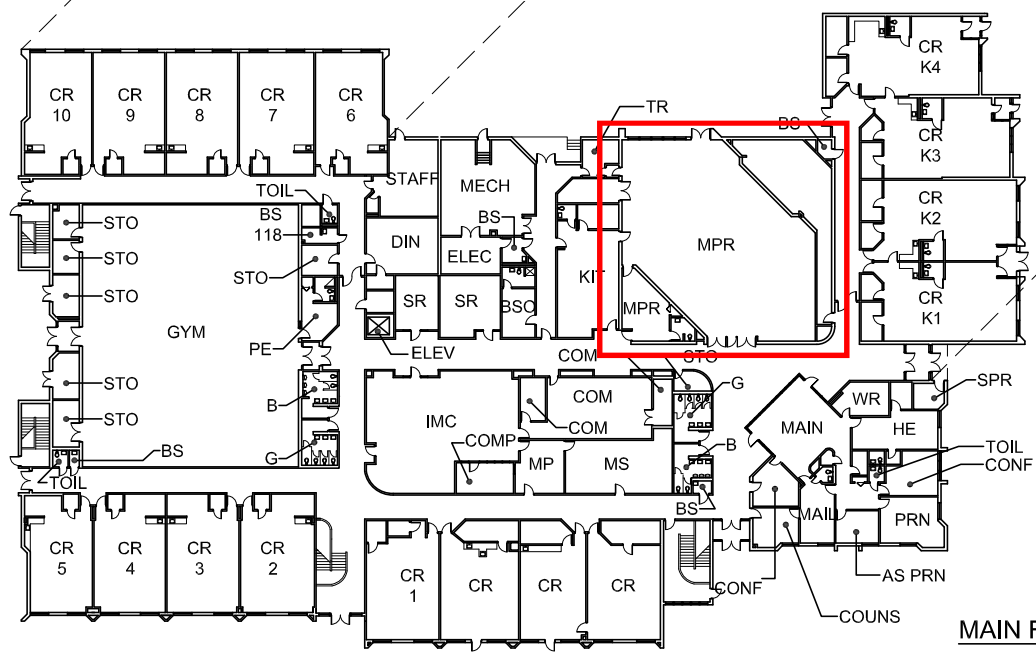
MAIN FLOOR PLAN



0' 10' 20' 40'
SCALE= 1:750

A graphic scale bar with markings at 0, 10, 20, and 40 feet. Below the bar, the text 'SCALE= 1:750' is printed.

GLEN HAVEN ELEMENTARY SCHOOL

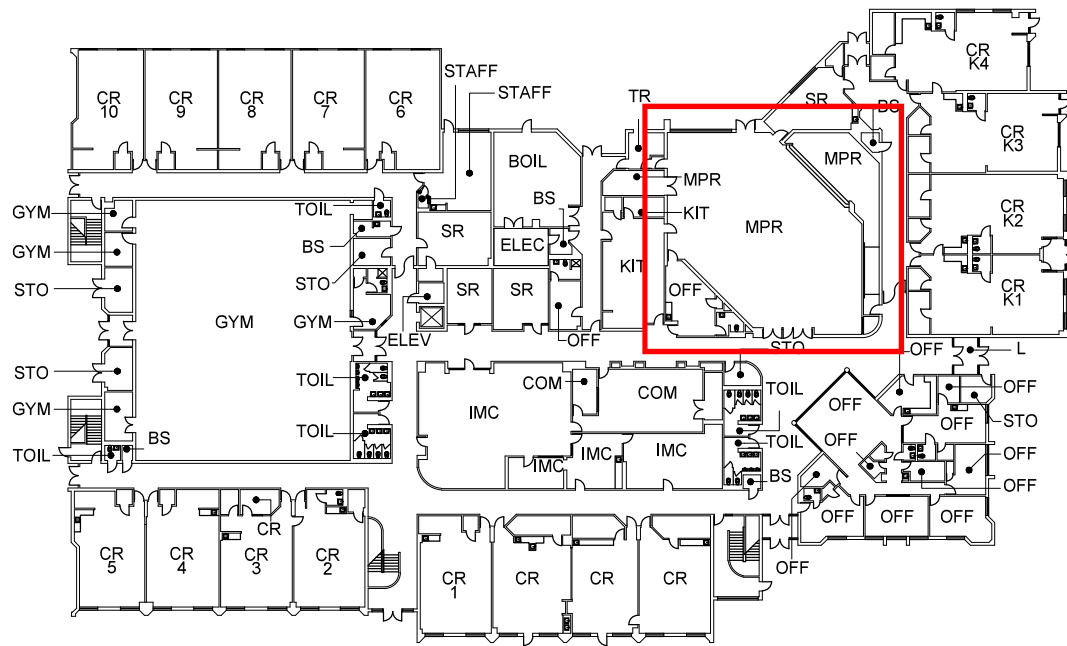


GOSHEN ELEMENTARY SCHOOL

MAIN FLOOR PLAN



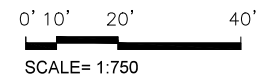
0' 10' 20' 40'
SCALE= 1:750

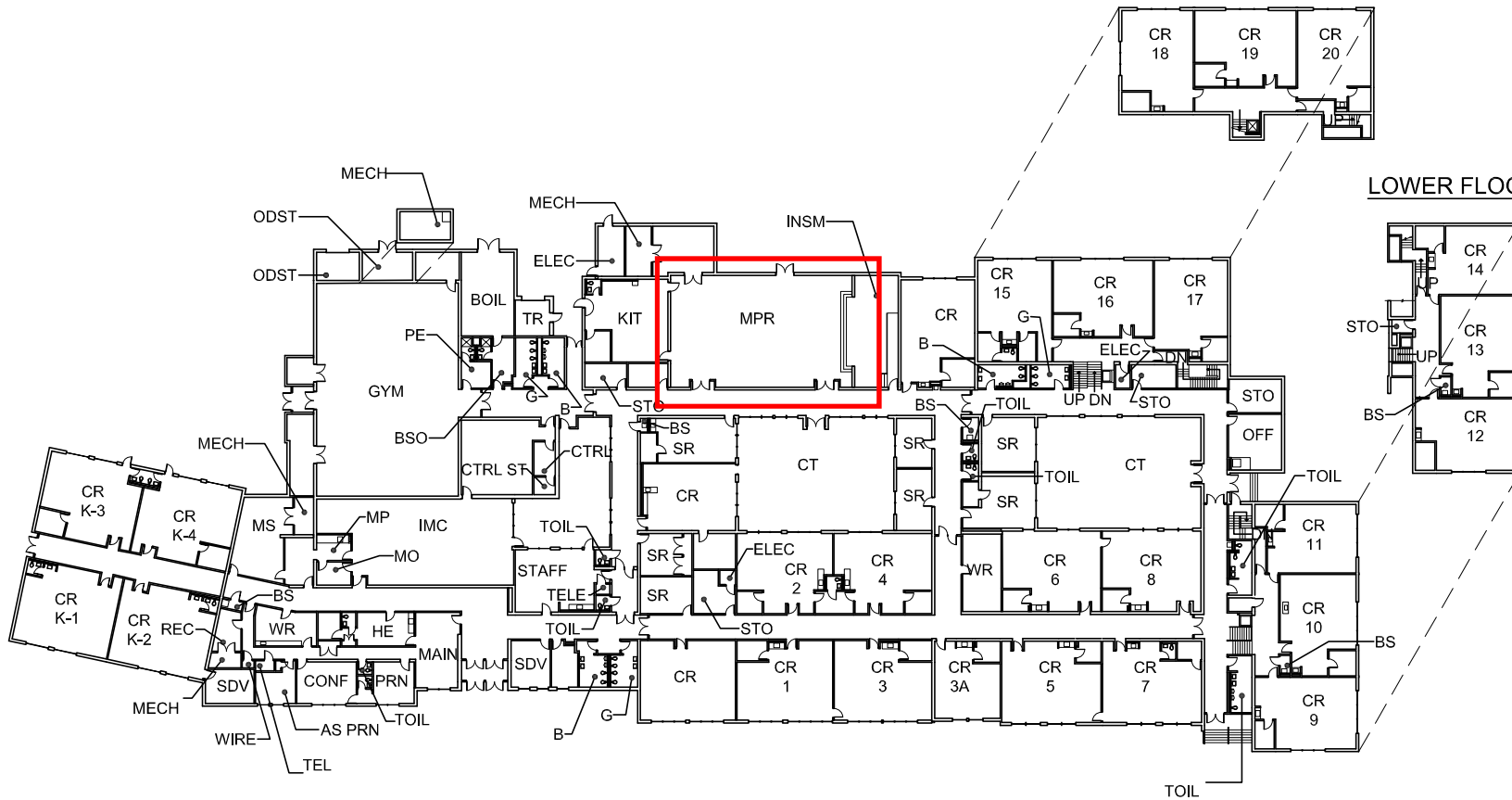


MAIN FLOOR PLAN



GREENCASTLE ELEMENTARY SCHOOL



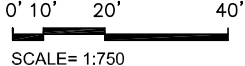


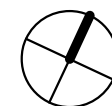
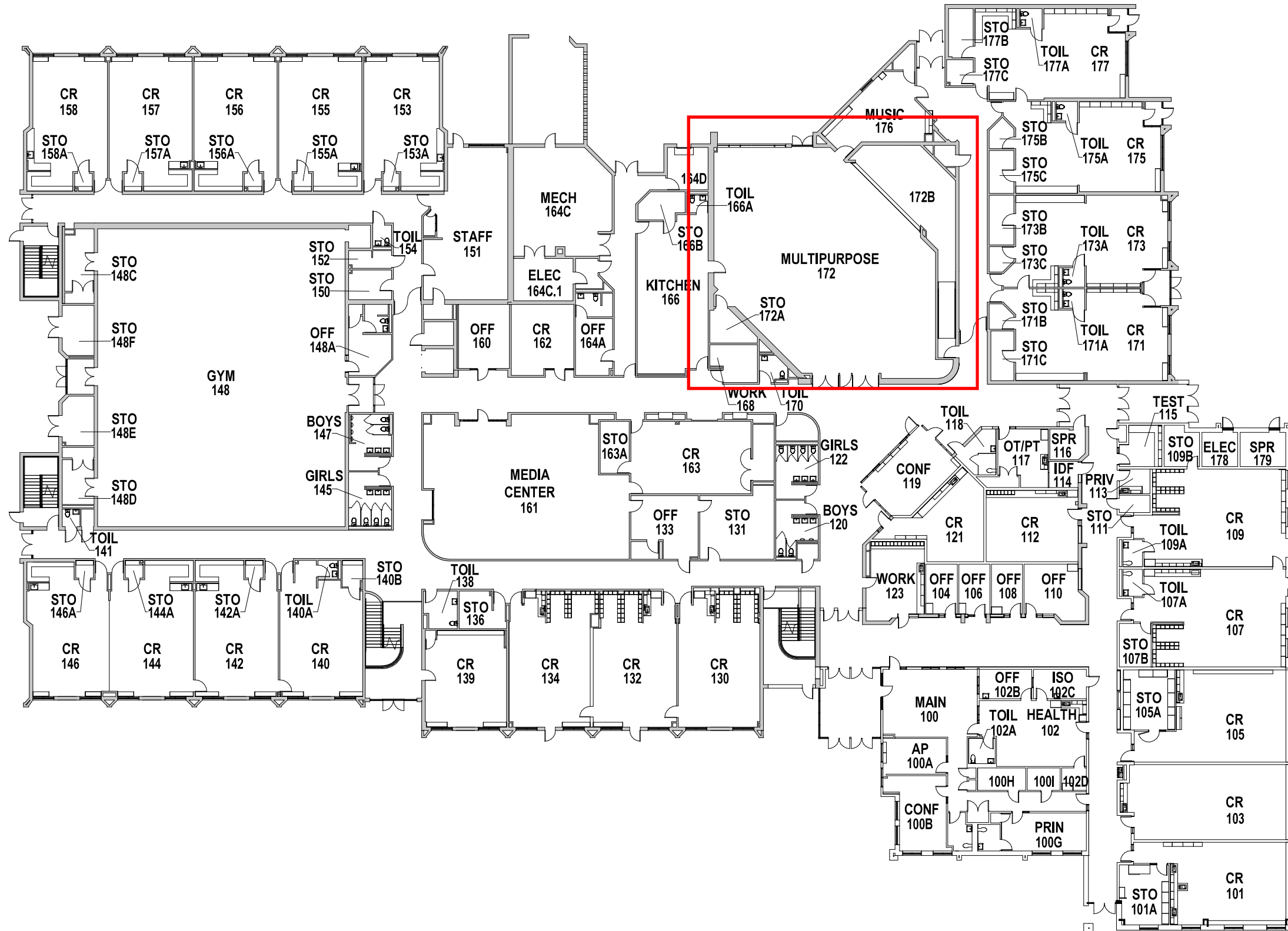
LOWER FLOOR PLAN

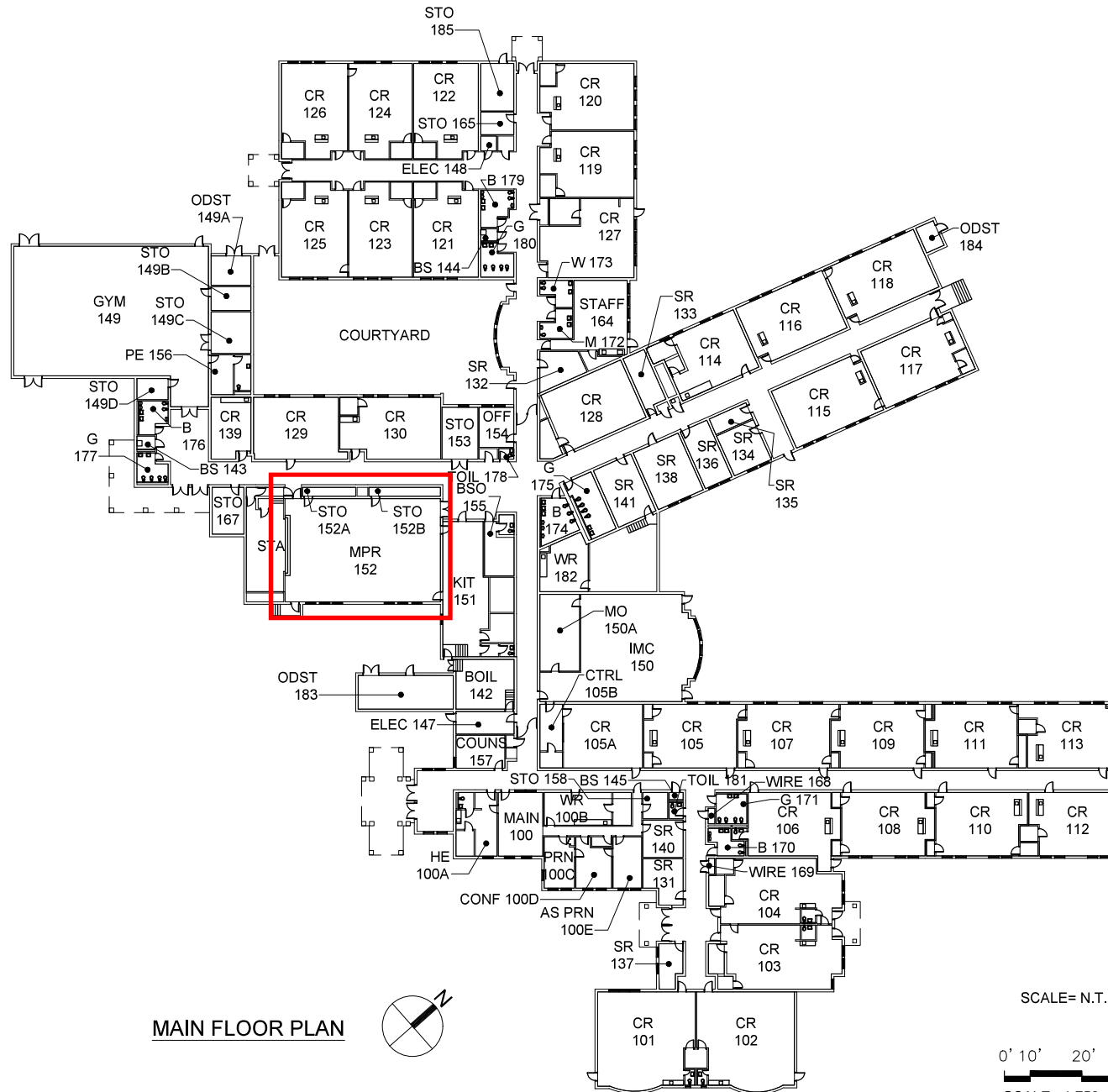
MAIN FLOOR PLAN



LAYTONSVILLE ELEMENTARY SCHOOL







MAIN FLOOR PLAN



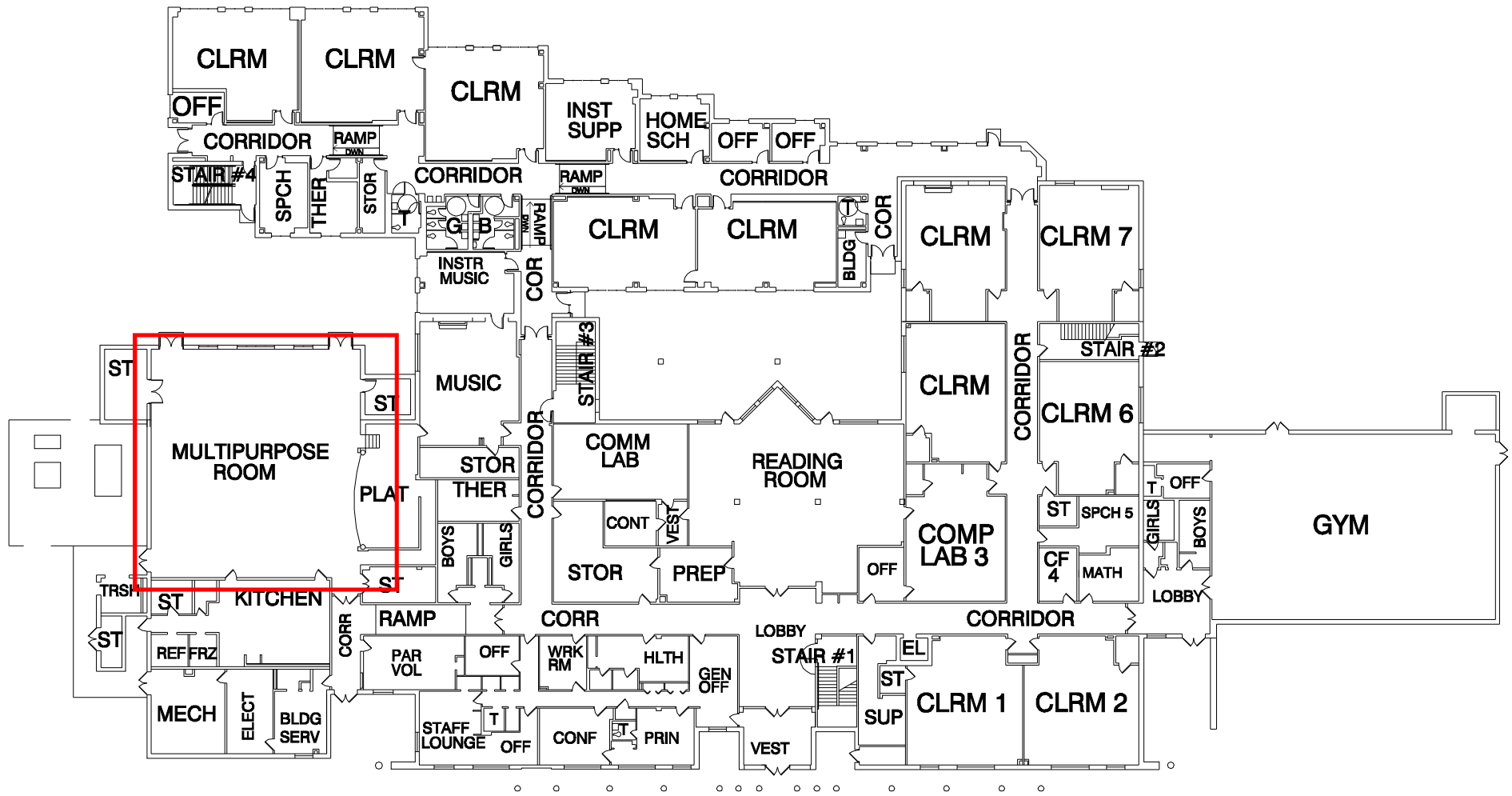
SCALE= N.T.S.

0' 10' 20' 40'

SCALE= 1:750

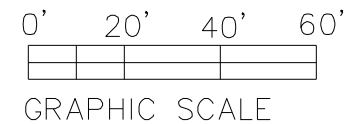
OLNEY ELEMENTARY SCHOOL

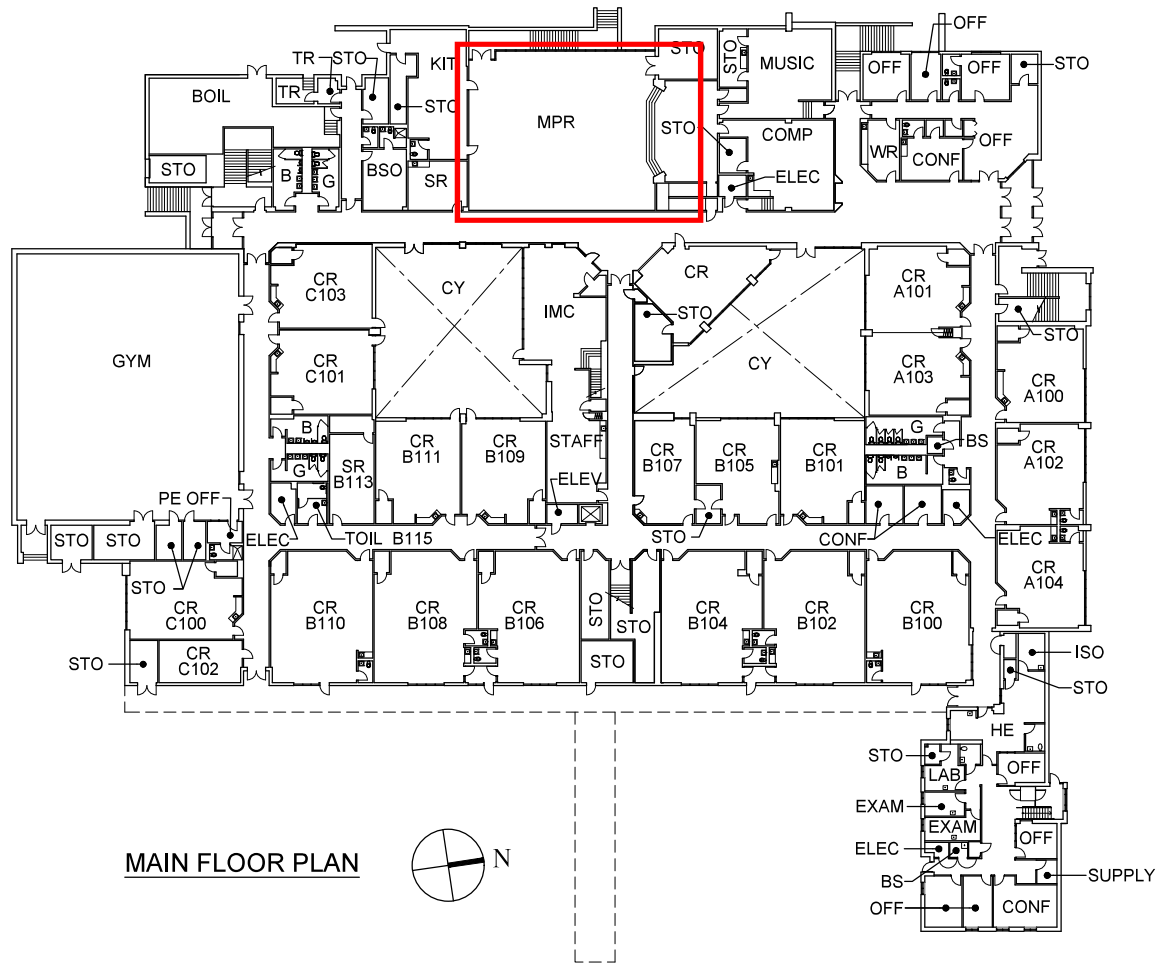
UPDATED: 3/31/20



FIRST FLOOR PLAN - OVERALL

PINE CREST ELEMENTARY SCHOOL



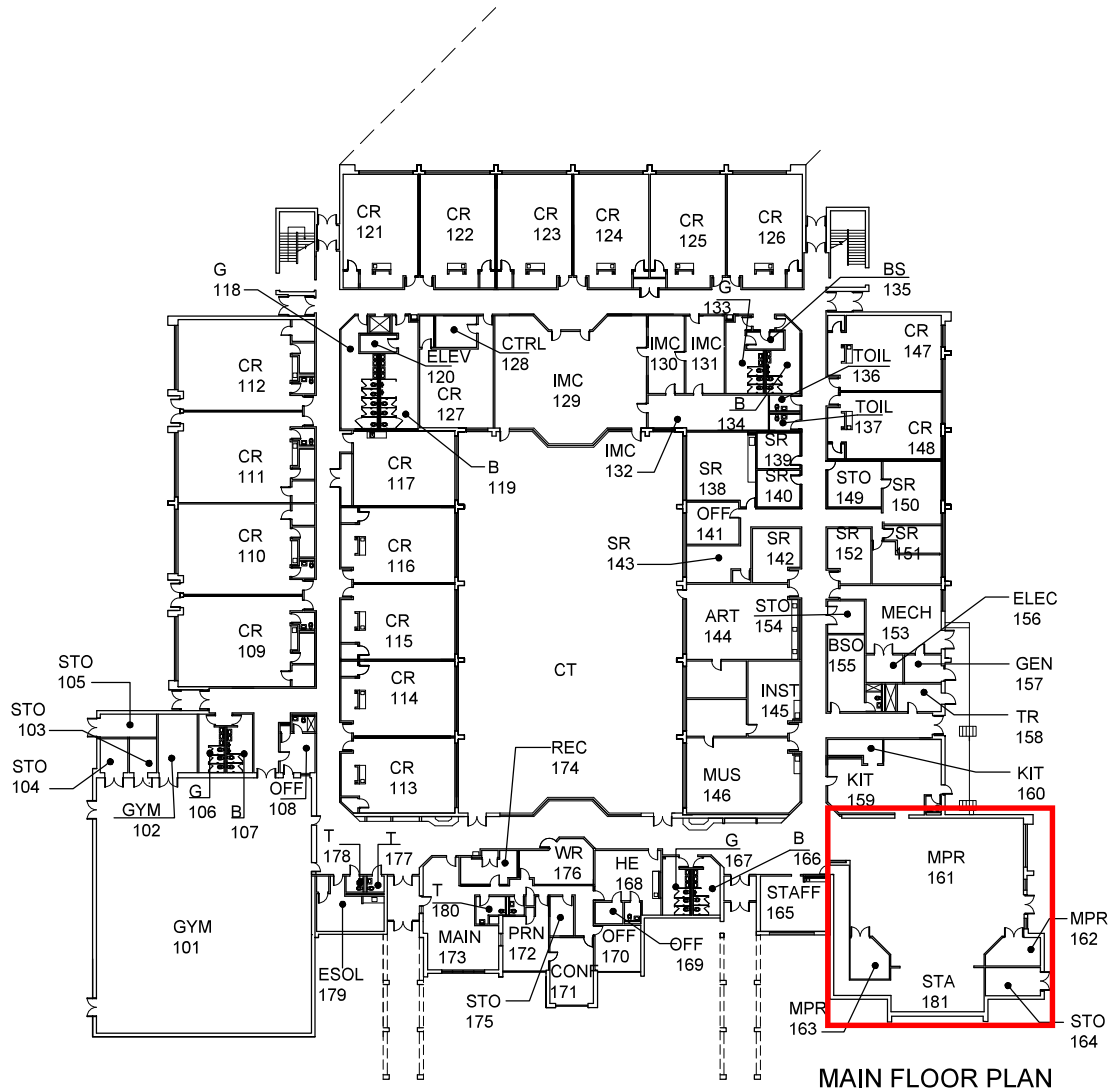


MAIN FLOOR PLAN



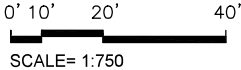
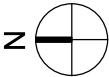
0' 10' 20' 40'
SCALE= 1:750

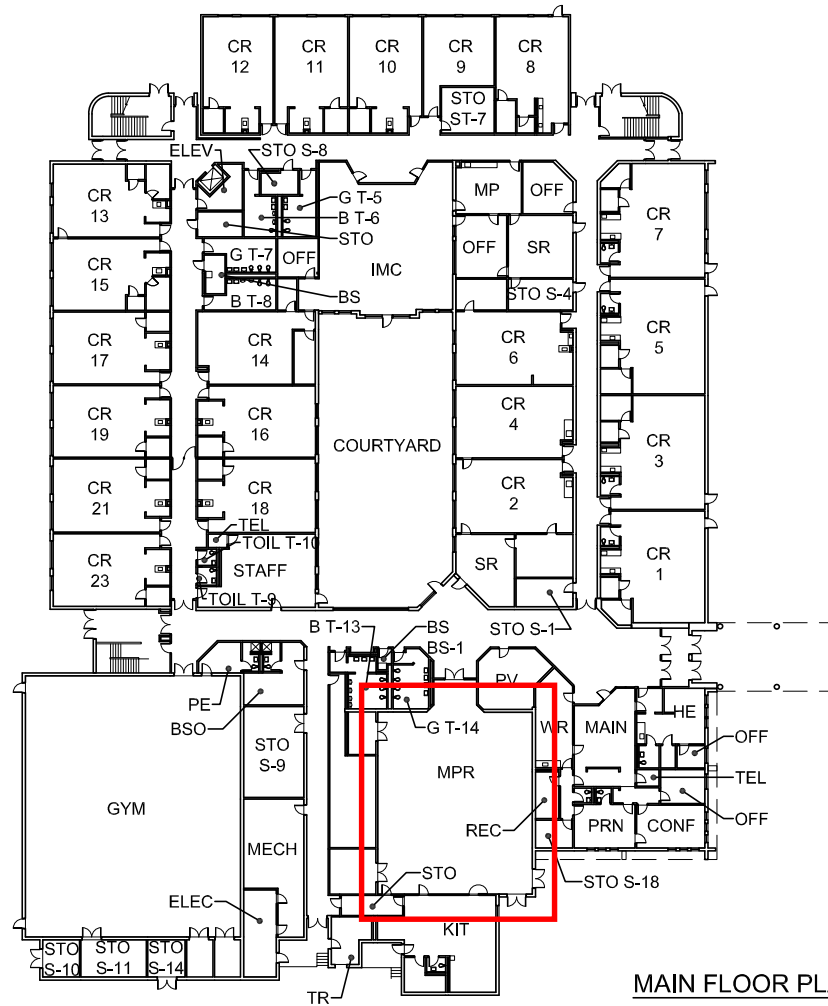
ROLLING TERRACE ELEMENTARY SCHOOL



MAIN FLOOR PLAN

SEQUOYAH ELEMENTARY SCHOOL





MAIN FLOOR PLAN



0' 10' 20' 40'
SCALE= 1:750

STONE MILL ELEMENTARY SCHOOL



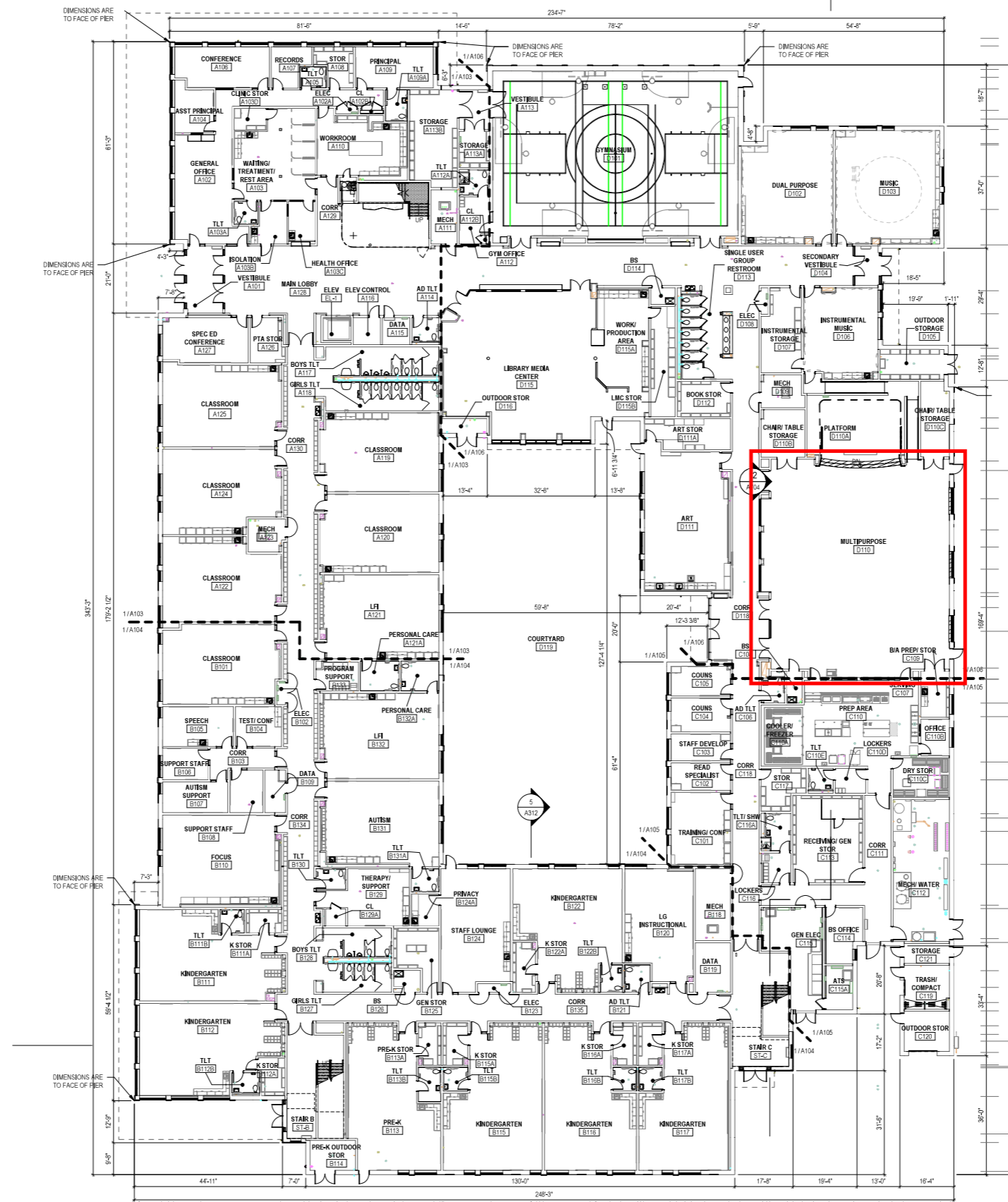
FLOOR PLAN

TRAVILAH ELEMENTARY SCHOOL

UPDATED: 4/3/20

****BURTONSVILLE
ELEMENTARY SCHOOL
REPLACEMENT**

The approved Burtonsville Elementary School replacement project will relocate the school to a new site. The replacement school has an anticipated completion date of August 2026. Please see Attachment A for more information.



**BURTONSVILLE
ELEMENTARY
SCHOOL**
MSDE - PUBLIC SCHOOL
CONSTRUCTION PROGRAM
(PSCP)#15,285

**MONTGOMERY COUNTY
PUBLIC SCHOOLS**
14709 SADDLE CREEK DR,
BURTONSVILLE, MD 20866

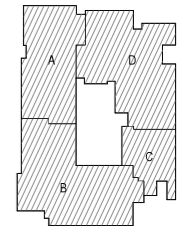
CIVIL
CLARK LAZAR & ASSOCIATES, INC.
2840 CENTURY BLVD., SUITE 220
GERMANTOWN, MD 20874
703.718.4335

STRUCTURAL
LINTON ENGINEERING
46090 LAKE CENTER PLAZA, SUITE 309
POTOMAC FALLS, VA 20155
571.323.0320

MEP/FP
JAMES POSEY ASSOCIATES
11155 RED RUN BOULEVARD, SUITE 310
BALTIMORE, MD 21117
410.265.6100

FOOD SERVICE
NYIKOS-GARCIA
7146 STARBUCKLINT WAY
NEW MARKET, MD 21774
240.683.9530

ACOUSTICS
POLYSONICS
405 BELLE AIR LANE
WARRENTON, VA 20188
540.341.4588



KEYPLAN

PROJECT # 23029

DATE	ISSUE
11/09/23	10% CD SUBMISSION
02/15/24	DESIGN DEVELOPMENT
05/04/24	65% CD SUBMISSION
07/25/24	95% CD SUBMISSION
08/30/24	BD SET



PROFESSIONAL CERTIFICATION
I CERTIFY THAT THESE DRAWINGS WERE
PREPARED OR APPROVED BY ME AND THAT
I AM A DULY LICENSED ARCHITECT UNDER
THE LAWS OF THE STATE OF MARYLAND.
LICENSE NUMBER: 0609641
EXPIRATION DATE: 07/03/2026

DRAWN: MS
CHECKED: EP
SCALE: AS INDICATED

SHEET TITLE:
**OVERALL FIRST FLOOR
PLAN**

© MTF A 2024 ALL RIGHTS RESERVED
SHEET #

